



# MEDICATECH VET®

A Medicatech Company

## Trinocular Biological Microscope

high-definition imaging system  
Cost-efficient



### Key Features



1.The EX-26 biological microscope features a trinocular drawtube and achromatic objectives (4X, 10X, 40X, 100X), delivering clear and detailed views of biological samples. It includes a 3-hole inward-revolving nosepiece for efficient objective switching.

2.Built-in HD Imaging System with an integrated 10.6" display provides high-definition imaging, capable of capturing high-speed photos at up to 60 frames per second. It supports HDMI output and SD card storage for easy image transfer and archiving.

3.Precise Focusing Mechanism: The microscope offers a focusing range of 25mm with fine adjustment intervals of 0.002mm, enabling accurate and smooth focusing.

4.Durable Eyepiece Head: The trinocular head is constructed from anti-corrosion and acid-resistant materials, ensuring long-term reliability and durability.

5.Nosepiece: Features a backward quadruple (4-hole) nosepiece for seamless switching between objectives.

6.Multi-Functional Condenser: Equipped with an Abbe condenser (NA=1.25) with an iris diaphragm for enhanced light control and imaging precision.



## Technical Parameters

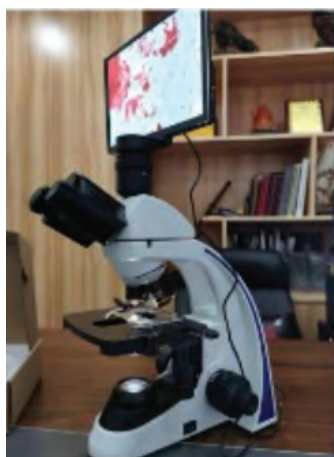
<b>LCD Screen:</b>	Size	10.6 inch IPS 10.6 Inches IPS
	Resolution	1366*768
Optical System		Finite Optical System / Infinite Optical System
Achromatic objective		4× N.A=0.1 WD=18 10× N.A=0.25 WD=7 40× N.A=0.65 WD=0.5 100× N.A=1.25 WD=0.13
Viewing Head		Three eye observation head
Eyepiece		WF10×/18
		WF10×/20
Focusing System		Coaxial Coarse and Fine Adjustment, Fine Division 0.002mm, Moving Range 25mm
Nosepiece		Backward Quadruple Nosepiece
Stage		Double Layers Mechanical Stage 140×140mm, Moving Range 75×50mm
		Rackless double Layers Mechanical Stage 150×139mm, Moving Range 75×52mm
Condenser		NA1.25 Abbe Condenser
Illumination		S-LED Illumination
Infinite Semi-Plan Achromatic Objective		4× N.A=0.1 WD=16.8 10× N.A=0.25 WD=5.8 40× N.A=0.65 WD=0.43 100× N.A=1.25 WD=0.13





## Digital parameters:

Parameter	Specification
Photo Resolution	4592*3072
Camera Pixel	1200w
Video Resolution	1080p/60fps
Data Output	HDMI
Wireless Connection	Yes(optional)
WDR	Yes
Function	Automatic exposure, exposure offset, automatic white balance, multiple measurement methods, video recording, local storage (maximum memory 32G)
Storage	SD Card
Measurement & Position	Yes(Customizable)
External Interface	Projector/Monitor





T. +1 949-679-2881  
F. +1 949-679-2882



[www.medicattechvet.com](http://www.medicattechvet.com)



[Support@medicatechvet.com](mailto:Support@medicatechvet.com)